

BeachPlace Towers

WILLIAMS HATFIELD AND STONER, INC.

2101 NORTH ANDREWS AVENUE, SUITE 300

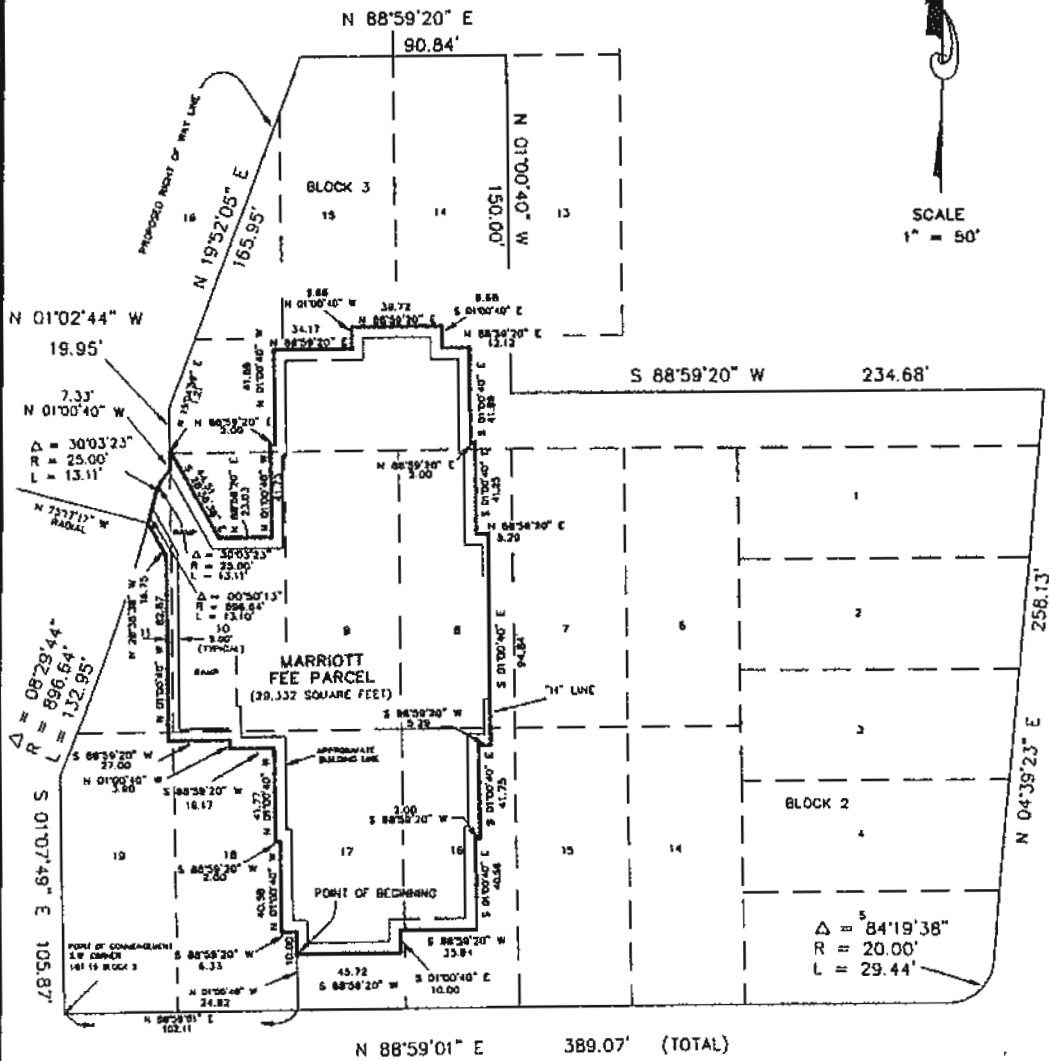
ENGINEERS PLANNERS LAND SURVEYORS

FT. LAUDERDALE, FLORIDA

SKETCH AND DESCRIPTION

EXHIBIT "B-1"

MARRIOTT FEE SIMPLE PARCEL



BK 24174 PG 170

SCALE
1" = 50'

SHEET 1 OF 2

SEAL
NOT VALID UNLESS
SEALED HERE WITH
AN EMBOSSED
SURVEYOR'S SEAL

CERTIFICATE

THIS IS TO CERTIFY THAT THE SKETCH SHOWN HEREON AND THE ATTACHED DESCRIPTION IS ACCURATE AND CORRECT TO THE BEST OF MY KNOWLEDGE AND BELIEF AND DOES NOT REPRESENT A FIELD SURVEY. I FURTHER CERTIFY THAT THIS SKETCH AND DESCRIPTION MEETS THE MINIMUM TECHNICAL STANDARDS SET FORTH UNDER RULE 61G17-6 F.A.C. ADOPTED BY THE FLORIDA BOARD OF LAND SURVEYORS, SEPTEMBER 1, 1981.

Keith R. Sanders
KEITH R. SANDERS, PROFESSIONAL SURVEYOR AND MAPPER NO. 4375, STATE OF FLORIDA

| REVISIONS | DATE | BY | DATE OF SKETCH | DRAWN BY | CHECKED BY | MANAGER |
|----------------------|----------|-----|----------------|----------|------------|---------|
| REVISE PARENT PARCEL | 11/16/95 | KRS | 7/11/95 | KRS | KRS | KRS |

SKETCH NO. 4044.00

WILLIAMS HATFIELD AND STONER, INC.

2101 NORTH ANDREWS AVENUE, SUITE 300

ENGINEERS PLANNERS LAND SURVEYORS

FT. LAUDERDALE, FLORIDA

SKETCH AND DESCRIPTION

EXHIBIT "B-1"

MARRIOTT FEE SIMPLE PARCEL

A parcel of land being all of Lot 9, Block 2, and a portion of Lots 8, 10, 11, 16, 17, 18 and 19, Block 2 and a portion of Lots 14 and 15, Block 3 together with a portion of Avenue Valencia (now vacated) as shown on Lander Del Mar as recorded in Plat Book 7, Page 30 of the Public Records of Broward County, Florida being more particularly described as follows:

COMMENCE at the Southwest corner of Lot 19 of said Block 2;

THENCE N 88°59'01" E along the South line of said Block 2 a distance of 102.11 feet;

THENCE N 01°00'40" W a distance of 24.82 feet to the POINT OF BEGINNING;

THENCE continue N 01°00'40" W a distance of 10.00 feet;

THENCE S 88°59'20" W a distance of 6.33 feet;

THENCE N 01°00'40" W a distance of 40.58 feet;

THENCE S 88°59'20" W a distance of 2.00 feet;

THENCE N 01°00'40" W a distance of 41.77 feet;

THENCE S 88°59'20" W a distance of 19.17 feet;

THENCE N 01°00'40" W a distance of 3.90 feet;

THENCE S 88°59'20" W a distance of 27.00 feet;

THENCE N 01°00'40" W a distance of 82.67 feet;

THENCE N 28°38'38" W a distance of 16.75 feet to a point on the arc of a non-tangent curve concave to the Northwest, a radial line of said curve through said point having a radial bearing of N 75°17'17" W;

THENCE Northeasterly and Northerly along the arc of said curve to the left, having a central angle of 00°50'13" and a radius of 896.84 feet for an arc distance of 13.10 feet to a point of reverse curvature concave to the Southeast;

THENCE Northerly and Northeasterly along the arc of said curve to the right, having a central angle of 30°03'23" and a radius of 25.00 feet for an arc distance of 13.11 feet to a point on a non-radial line;

THENCE N 01°00'40" W a distance of 7.33 feet;

THENCE N 15°04'59" E a distance of 1.21 feet;

THENCE S 28°38'38" E a distance of 44.51 feet;

THENCE N 88°59'20" E a distance of 23.03 feet;

THENCE N 01°00'40" W a distance of 41.73 feet;

THENCE N 88°59'20" E a distance of 2.00 feet;

THENCE N 01°00'40" W a distance of 41.89 feet;

THENCE N 88°59'20" E a distance of 34.17 feet;

THENCE N 01°00'40" W a distance of 9.68 feet;

THENCE N 88°59'20" E a distance of 38.72 feet;

THENCE S 01°00'40" E a distance of 9.68 feet;

THENCE N 88°59'20" E a distance of 12.12 feet;

THENCE S 01°00'40" E a distance of 41.89 feet;

THENCE N 88°59'20" E a distance of 2.00 feet;

THENCE S 01°00'40" E a distance of 41.25 feet;

THENCE N 88°59'20" E a distance of 5.29 feet to a point on Grid Line "H" as shown on the plans for "Beach Place" as prepared by Roy D. Smith and Associates dated May 5, 1995;

THENCE S 01°00'40" E along said Grid Line "H" a distance of 94.84 feet;

THENCE S 88°59'20" W a distance of 5.29 feet;

THENCE S 01°00'40" E a distance of 41.75 feet;

THENCE S 88°59'20" W a distance of 2.00 feet;

THENCE S 01°00'40" E a distance of 40.58 feet;

THENCE S 88°59'20" W a distance of 33.94 feet;

THENCE S 01°00'40" E a distance of 10.00 feet;

THENCE S 88°59'20" W a distance of 45.72 feet to the POINT OF BEGINNING;

Said land situate within the City of Fort Lauderdale, Broward County, Florida, containing 29,332 square feet, more or less.

BR 24174 PG 0171

SKETCH NO. 404400

SHEET 2 OF 2

| REVISIONS | DATE | BY | DATE OF SKETCH | DRAWN BY | CHECKED BY | MANAGER |
|--------------------|----------|-----|----------------|----------|------------|---------|
| REVISE LOT NUMBERS | 11/16/95 | KRS | 7/11/95 | KRS | KRS | KRS |

WILLIAMS HATFIELD AND STONER, INC.

2101 NORTH ANDREWS AVENUE, SUITE 300

ENGINEERS PLANNERS LAND SURVEYORS

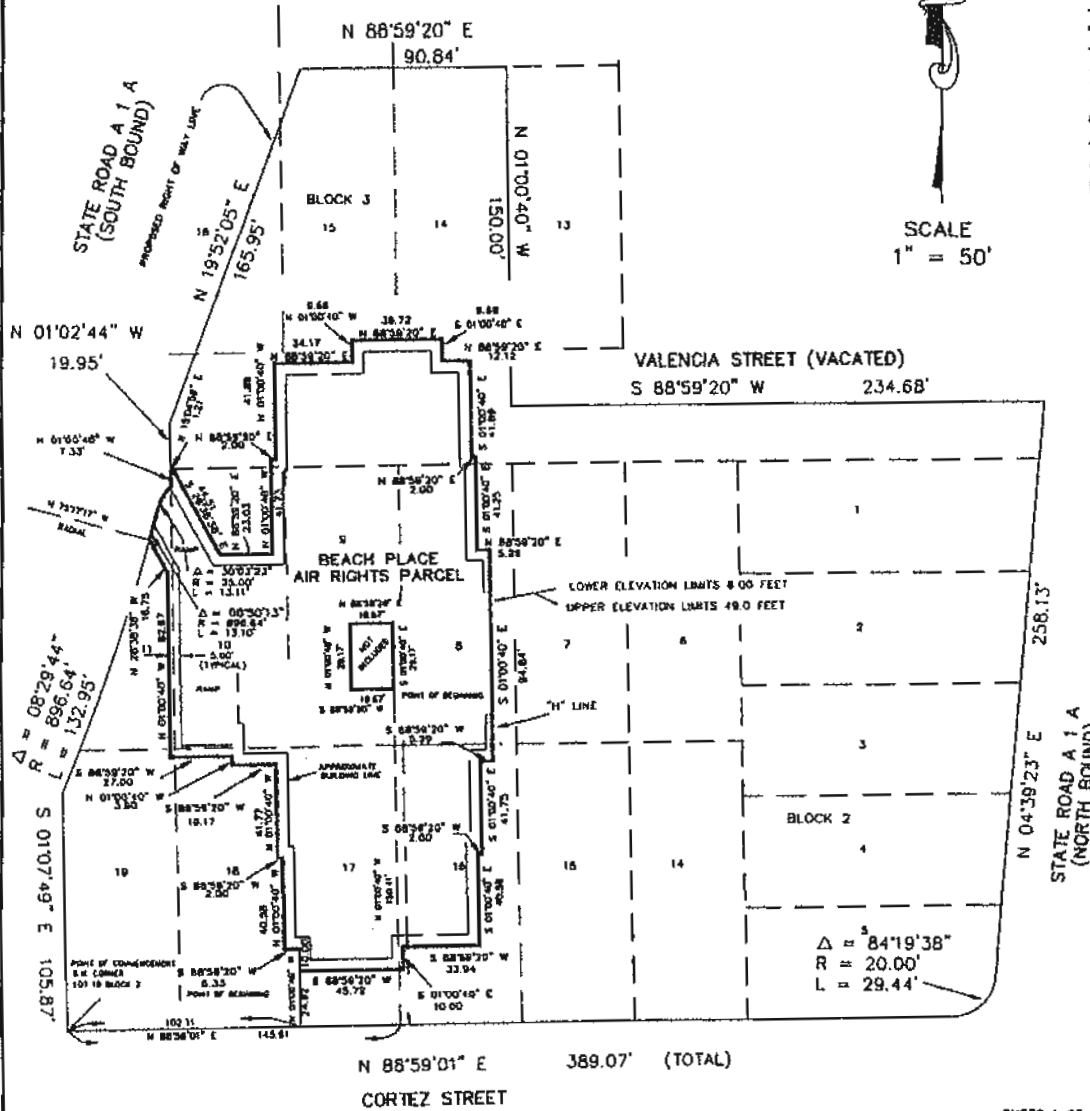
FT. LAUDERDALE, FLORIDA

SKETCH AND DESCRIPTION

EXHIBIT "A-2"

BEACH PLACE AIR RIGHTS PARCEL

8K24174P60172



SCALE
1" = 50'

SHEET 1 OF 3

SEAL
NOT VALID UNLESS
SEALED HERE WITH
AN EMBOSSED
SURVEYOR'S SEAL

CERTIFICATE

THIS IS TO CERTIFY THAT THE SKETCH SHOWN HEREON AND THE ATTACHED DESCRIPTION IS ACCURATE AND CORRECT TO THE BEST OF MY KNOWLEDGE AND BELIEF AND DOES NOT REPRESENT A FIELD SURVEY. I FURTHER CERTIFY THAT THIS SKETCH AND DESCRIPTION MEETS THE MINIMUM TECHNICAL STANDARDS SET FORTH UNDER RULE 61C17-6 F.A.C. ADOPTED BY THE FLORIDA BOARD OF LAND SURVEYORS, SEPTEMBER 1, 1981.

Keith R. Sanders
 KEITH R. SANDERS, PROFESSIONAL SURVEYOR AND MAPPER NO. 4525, STATE OF FLORIDA

| REVISIONS | DATE | BY |
|----------------------|----------|-----|
| REVISE PARENT PARCEL | 11/16/95 | KRS |

| DATE OF SKETCH | DRAWN BY | CHECKED BY | MANAGER |
|----------------|----------|------------|---------|
| 7/11/95 | KRS | KRS | KRS |

SECTION NO. 404400

WILLIAMS HATFIELD AND STONER, INC.

2101 NORTH ANDREWS AVENUE, SUITE 300

ENGINEERS PLANNERS LAND SURVEYORS

FT. LAUDERDALE, FLORIDA

SKETCH AND DESCRIPTION

EXHIBIT "A-2"

BEACH PLACE AIR RIGHTS PARCEL

A portion of airspace lying between elevation 6.00 feet and elevation 49.0 feet (Elevations based on the National Geodetic Vertical Datum of 1929) and being a portion of Lots 8, 9, 10, 11, 16, 17, 18 and 19 Block 2 and Lots 14 and 15 Block 3 (together with a portion of Avenue Valencio (now vacated) as shown on Louder Del Mar as recorded in Plat Book 7, Page 30 of the Public Records of Broward County, Florida being more particularly described as follows:

COMMENCE at the Southwest corner of Lot 19 of said Block 2;

THENCE N 88°58'01" E along the South line of said Block 2 a distance of 102.11 feet;

THENCE N 01°00'40" W a distance of 24.92 feet to the POINT OF BEGINNING;

THENCE continue N 01°00'40" W a distance of 10.00 feet;

THENCE S 88°59'20" W a distance of 8.33 feet;

THENCE N 01°00'40" W a distance of 40.58 feet;

THENCE S 88°59'20" W a distance of 2.00 feet;

THENCE N 01°00'40" W a distance of 41.77 feet;

THENCE S 88°59'20" W a distance of 19.17 feet;

THENCE N 01°00'40" W a distance of 3.80 feet;

THENCE S 88°59'20" W a distance of 27.00 feet;

THENCE N 01°00'40" W a distance of 82.87 feet;

THENCE N 28°38'38" W a distance of 16.75 feet to a point on the arc of a non-tangent curve concave to the Northwest, a radial line of said curve through said point having a radial bearing of N 75°17'17" W.

THENCE Northeasterly and Northerly along the arc of said curve to the left, having a central angle of 00°50'13" and a radius of 896.84 feet for an arc distance of 13.10 feet to a point of reverse curvature concave to the Southeast;

THENCE Northerly and Northeasterly along the arc of said curve to the right, having a central angle of 30°03'23" and a radius of 25.00 feet for an arc distance of 13.11 feet to a point on a non-radial line;

THENCE N 01°00'40" W a distance of 7.33 feet;

THENCE N 15°04'58" E a distance of 1.21 feet;

THENCE S 28°38'38" E a distance of 44.91 feet;

THENCE N 88°59'20" E a distance of 23.03 feet;

THENCE N 01°00'40" W a distance of 41.73 feet;

THENCE N 88°59'20" E a distance of 2.00 feet;

THENCE N 01°00'40" W a distance of 41.89 feet;

THENCE N 88°59'20" E a distance of 34.17 feet;

THENCE N 01°00'40" W a distance of 9.68 feet;

THENCE N 88°59'20" E a distance of 39.72 feet;

THENCE S 01°00'40" E a distance of 9.68 feet;

THENCE N 88°59'20" E a distance of 12.12 feet;

THENCE S 01°00'40" E a distance of 41.89 feet;

THENCE N 88°59'20" E a distance of 2.00 feet;

THENCE S 01°00'40" E a distance of 41.25 feet;

THENCE N 88°59'20" E a distance of 5.29 feet to a point on Grid Line "H" as shown on the plans for "Beach Place" as prepared by Roy D. Smith and Associates dated May 5, 1995;

THENCE S 01°00'40" E along said Grid Line "H" a distance of 94.84 feet;

THENCE S 88°59'20" W a distance of 5.29 feet;

THENCE S 01°00'40" E a distance of 41.75 feet;

THENCE S 88°59'20" W a distance of 2.00 feet;

THENCE S 01°00'40" E a distance of 40.58 feet;

THENCE S 88°59'20" W a distance of 33.94 feet;

THENCE S 01°00'40" E a distance of 10.00 feet;

THENCE S 88°59'20" W a distance of 45.72 feet to the POINT OF BEGINNING;

LESS THE FOLLOWING DESCRIBED PARCEL

Handwritten initials: RL

SKETCH NO. 4044.00

| REVISIONS | DATE | BY | DATE OF SKETCH | DRAWN BY | CHECKED BY | MANAGER |
|-----------|------|----|----------------|----------|------------|---------|
| | | | 7/11/95 | KRS | KRS | KRS |

EK24174PG0174

WILLIAMS HATFIELD AND STONER, INC.

2101 NORTH ANDREWS AVENUE, SUITE 300

ENGINEERS PLANNERS LAND SURVEYORS

FT. LAUDERDALE, FLORIDA

SKETCH AND DESCRIPTION

EXHIBIT "A-2"

BEACH PLACE AIR RIGHTS PARCEL

ELEVATOR PARCEL

COMMENCE at the Southwest corner of Lot 18 of said Block 2;

THENCE N 88°59'01" E along the South line of said Block 2 a distance of 145.91 feet to a point on a line 1.25 feet East of and parallel with Grid Line "F" of said Beach Place.

THENCE N 01°00'40" W along said parallel line a distance of 150.41 feet to a point on a line 0.83 feet South of and parallel with Grid Line "E" of said Beach Place, said point being the POINT OF BEGINNING;

THENCE S 88°59'20" W along said parallel line a distance of 18.67 feet to a point on a line 17.42 feet West of and parallel with Grid Line "F";

THENCE N 01°00'40" W along said parallel line a distance of 29.17 feet to a point on a line 0.83 feet North of and parallel with Grid Line "G" of said Beach Place;

THENCE N 88°59'20" E along said parallel line a distance of 18.67 feet to a point on a line 1.25 feet East of and parallel with Grid Line "F";

THENCE S 01°00'40" E along said parallel line a distance of 29.17 feet to the POINT OF BEGINNING;

Said airspace situate within the City of Fort Lauderdale, Broward County, Florida, covering a horizontal surface area of 26,787 square feet, more or less.

SHEET 3 OF 3

SKETCH NO. 4044.00

| REVISIONS | DATE | BY | DATE OF SKETCH | DRAWN BY | CHECKED BY | MANAGER |
|-----------|------|----|----------------|----------|------------|---------|
| | | | 7/11/95 | KRS | KRS | KRS |

WILLIAMS HATFIELD AND STONER, INC.

2101 NORTH ANDREWS AVENUE, SUITE 300

ENGINEERS PLANNERS LAND SURVEYORS

FT. LAUDERDALE, FLORIDA

SKETCH AND DESCRIPTION

EXHIBIT "A-2"

BEACH PLACE AIR RIGHTS PARCEL
RAMP FROM P4 TO P5

A portion of airspace 10.33 feet in height being a portion of Lots 9, 10, 17 and 18, Block 2 together with a portion of Avenue Valencia (now vacated) as shown on Lander Bal Map as recorded in Plat Book 7, Page 30 of the Public Records of Broward County, Florida, said airspace being more particularly described as follows:

Elevations are based on the National Geodetic Vertical Datum of 1929;

COMMENCE at the southwest corner of Lot 19 of said Block 2;

THENCE N 88°59'01" E along the South line of said Block 2 a distance of 189.07 feet;

THENCE N 01°00'40" W a distance of 212.67 feet;

THENCE S 88°59'20" W a distance of 5.29 feet;

THENCE N 01°00'40" W a distance of 41.25 feet;

THENCE S 88°59'20" W a distance of 2.00 feet;

THENCE N 01°00'40" W a distance of 41.89 feet;

THENCE S 88°59'20" W a distance of 12.12 feet;

THENCE N 01°00'40" W a distance of 9.88 feet;

THENCE S 88°59'20" W a distance of 39.72 feet;

THENCE S 01°00'40" E a distance of 9.88 feet;

THENCE S 88°59'20" W a distance of 3.00 feet to the POINT OF BEGINNING, said point having a lower elevation 40.3 feet and an upper elevation of 50.6 feet;

THENCE continue along a horizontal plane S 88°59'20" W for a horizontal distance of 31.18 feet, said point having a lower elevation of 40.3 feet and an upper elevation of 50.6 feet;

THENCE ascending S 01°00'40" E for an incline distance of 41.84 feet (horizontal distance of 41.89 feet), said point having a lower elevation of 42.4 feet and an upper elevation of 52.7 feet;

THENCE S 88°59'20" W on a horizontal plane a horizontal distance of 2.00 feet said point having a lower elevation of 42.4 feet and an upper elevation of 52.7 feet;

THENCE ascending S 01°00'40" E for an incline distance of 41.80 feet (horizontal distance of 41.73 feet), said point having a lower elevation of 44.5 feet and an upper elevation of 54.8 feet;

THENCE S 88°59'20" W on a horizontal plane a horizontal distance of 23.03 feet said point having a lower elevation of 44.5 feet and an upper elevation of 54.8 feet;

THENCE descending N 28°38'38" W for an incline distance of 10.88 feet (horizontal distance of 10.87 feet) said point having a lower elevation of 44.0 feet and an upper elevation of 54.3 feet;

THENCE ascending S 01°00'40" E for an incline distance of 99.11 feet (horizontal of 98.99 feet), said point having a lower elevation of 49.0 feet and an upper elevation of 59.3 feet;

THENCE N 88°59'20" E along a horizontal plane a horizontal distance of 81.17 feet, said point having a lower elevation of 49.0 feet and an upper elevation of 59.3 feet;

THENCE descending N 01°00'40" W on incline distance of 173.20 feet (horizontal distance of 172.98 feet) to the POINT OF BEGINNING;

Said airspace situate within the City of Fort Lauderdale, Broward County, Florida covering a horizontal surface area of 8,179 square feet, more or less.

Handwritten signature/initials

SHEET 2 OF 2

SKETCH NO. 4044.00

| REVISIONS | DATE | BY | DATE OF SKETCH | DRAWN BY | CHECKED BY | MANAGER |
|-----------|------|----|----------------|----------|------------|---------|
| | | | 7/11/95 | KRS | KRS | KRS |

SK 24174PG0175

WILLIAMS HATFIELD AND STONER, INC.

2101 NORTH ANDREWS AVENUE, SUITE 300

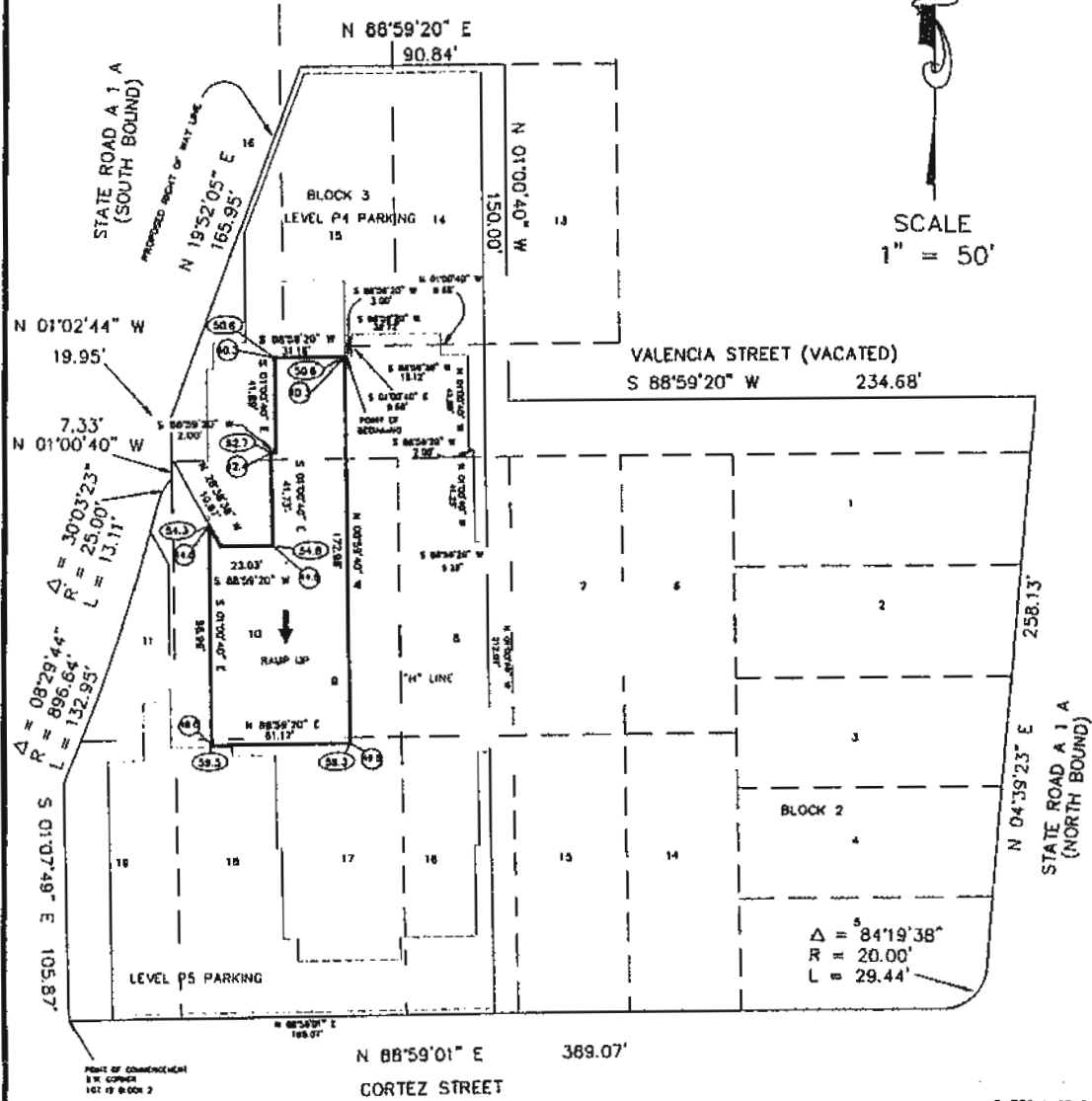
ENGINEERS PLANNERS LAND SURVEYORS

FT. LAUDERDALE, FLORIDA

SKETCH AND DESCRIPTION

EXHIBIT "A-2"

BEACH PLACE AIR RIGHTS PARCEL
RAMP FROM P4 TO P5



SCALE
1" = 50'

- (49.0) DENOTES LOWER ELEVATION LIMITS
- (59.3) DENOTES UPPER ELEVATION LIMITS

DISTANCES SHOWN HEREON REPRESENT HORIZONTAL DISTANCES

SHEET 1 OF 2

SEAL
NOT VALID UNLESS
SEALED HERE WITH
AN EMBOSSED
SURVEYOR'S SEAL

CERTIFICATE

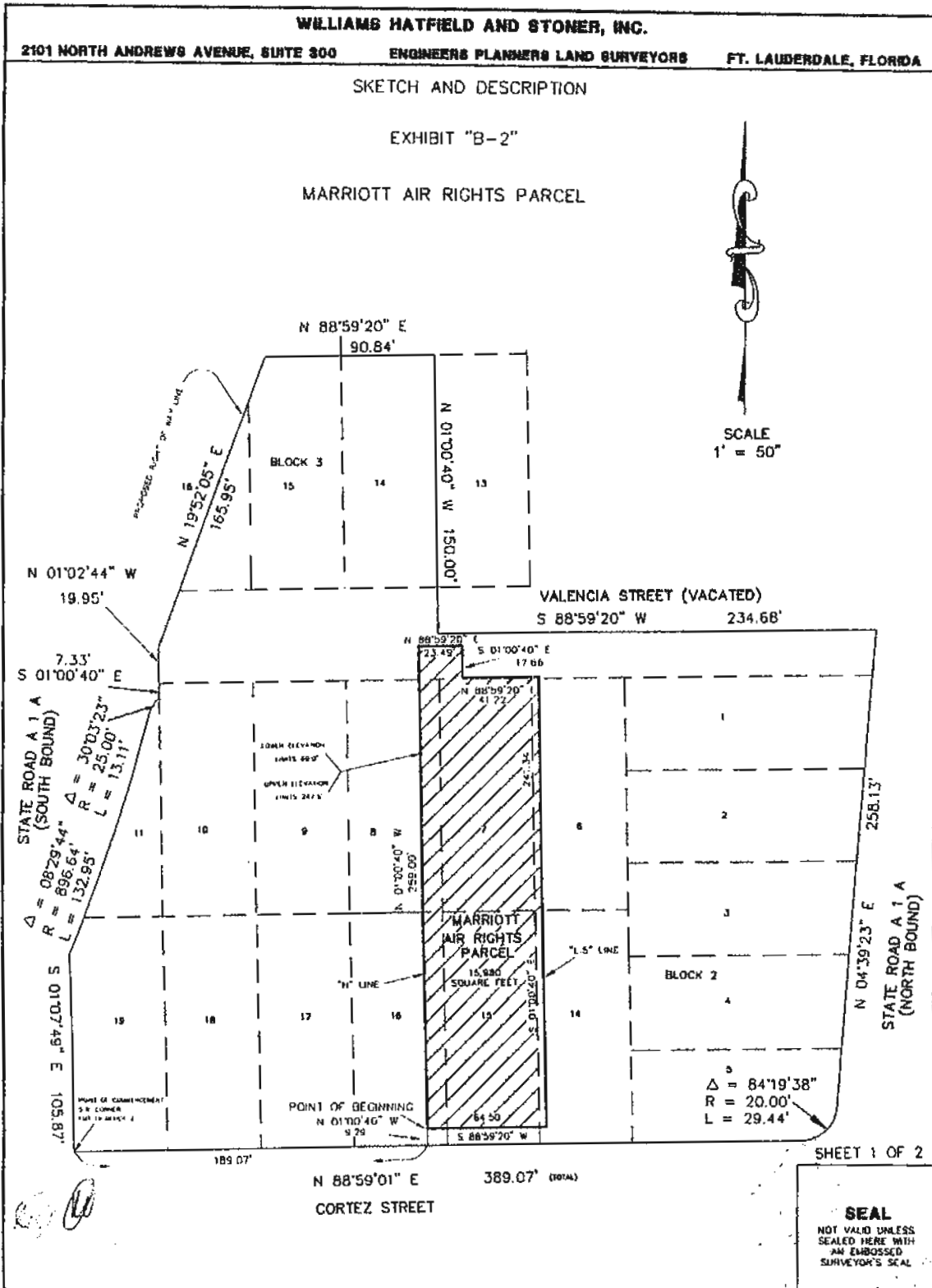
THIS IS TO CERTIFY THAT THE SKETCH SHOWN HEREON AND THE ATTACHED DESCRIPTION IS ACCURATE AND CORRECT TO THE BEST OF MY KNOWLEDGE AND BELIEF AND DOES NOT REPRESENT A FIELD SURVEY. I FURTHER CERTIFY THAT THIS SKETCH AND DESCRIPTION MEETS THE MINIMUM TECHNICAL STANDARDS SET FORTH UNDER RULE 61B77-6 F.A.C. ADOPTED BY THE FLORIDA BOARD OF LAND SURVEYORS, SEPTEMBER 1, 1981.

Keith R. Sanders
KEITH R. SANDERS, PROFESSIONAL SURVEYOR AND MAPPER NO. 4376, STATE OF FLORIDA

| REVISIONS | DATE | BY | DATE OF SKETCH | DRAWN BY | CHECKED BY | MANAGER |
|----------------------|----------|-----|----------------|----------|------------|---------|
| REVISE PARENT PARCEL | 11/16/95 | KRS | 7/11/95 | KRS | KRS | KRS |

SHEET NO. 4044.00

BK24174PG0177



CERTIFICATE

THIS IS TO CERTIFY THAT THE SKETCH SHOWN HEREON AND THE ATTACHED DESCRIPTION IS ACCURATE AND CORRECT TO THE BEST OF MY KNOWLEDGE AND BELIEF AND DOES NOT REPRESENT A FIELD SURVEY. I FURTHER CERTIFY THAT THIS SKETCH AND DESCRIPTION MEETS THE MINIMUM TECHNICAL STANDARDS SET FORTH UNDER RULE 61G17-8 F.A.C. ADOPTED BY THE FLORIDA BOARD OF LAND SURVEYORS, SEPTEMBER 1, 1981.

KRS
 KATH E. SANDERS, PROFESSIONAL SURVEYOR AND MAPPER NO. 4375, STATE OF FLORIDA

| REVISIONS | DATE | BY |
|----------------------|----------|-----|
| REVISE PARENT PARCEL | 11/16/95 | KRS |

| | | | |
|----------------|----------|------------|---------|
| DATE OF SURVEY | DRAWN BY | CHECKED BY | MANAGER |
| 7/11/95 | KRS | KRS | KRS |

4044.00

BK 24174PG0178

WILLIAMS HATFIELD AND STONER, INC.

2101 NORTH ANDREWS AVENUE, SUITE 300 ENGINEERS PLANNERS LAND SURVEYORS FT. LAUDERDALE, FLORIDA

SKETCH AND DESCRIPTION

EXHIBIT "B-2"

MARRIOTT AIR RIGHTS PARCEL

A portion of airspace lying between an elevation of 60.00 feet and 247.50 feet (Elevations based on the National Geodetic Vertical Datum of 1929) and being a portion of Lots 6, 7, 8, 14, 15, and 16, Block 2, Together with a portion of Avenue Valencia (now vacated) as shown on Lauder Del Mar as recorded in Plat Book 7, Page 30 of the Public Records of Broward County, Florida being more particularly described as follows:

COMMENCE at the Southwest corner of Lot 19 of said Block 2;

THENCE N 88°59'01" E along the South line of said Block 2 a distance of 189.07 feet to the point on Grid Line "H" as shown on the plans for "Beach Place" as prepared by Roy O. Smith and Associates, AIA dated May 5, 1995;

THENCE N 01°00'40" W along said Grid Line "H" a distance of 9.29 feet to the POINT OF BEGINNING;

THENCE continue N 01°00'40" W along said Grid Line "H" a distance of 259.00 feet;

THENCE N 88°59'20" E a distance of 23.49 feet;

THENCE S 01°00'40" E a distance of 17.66 feet;

THENCE N 88°59'20" E a distance of 41.22 feet to a point on Grid Line L.5 as shown on the said plans for "Beach Place";

THENCE S 01°00'40" E along said Line L.5 a distance of 241.34 feet;

THENCE S 88°59'20" W a distance of 64.50 feet to the POINT OF BEGINNING;

Said airspace situate within the City of Fort Lauderdale, Broward County, Florida, containing horizontal surface area of 15,980 square feet, more or less.

SHEET 2 OF 2

SKETCH NO. 4044.00

| REVISIONS | DATE | BY | DATE OF SKETCH | DRAWN BY | CHECKED BY | MANAGER |
|--------------------|----------|-----|----------------|----------|------------|---------|
| REVISE LOT NUMBERS | 11/16/95 | KRS | 7/11/95 | KRS | KRS | KRS |

WILLIAMS HATFIELD AND STONER, INC.

2101 NORTH ANDREWS AVENUE, SUITE 300

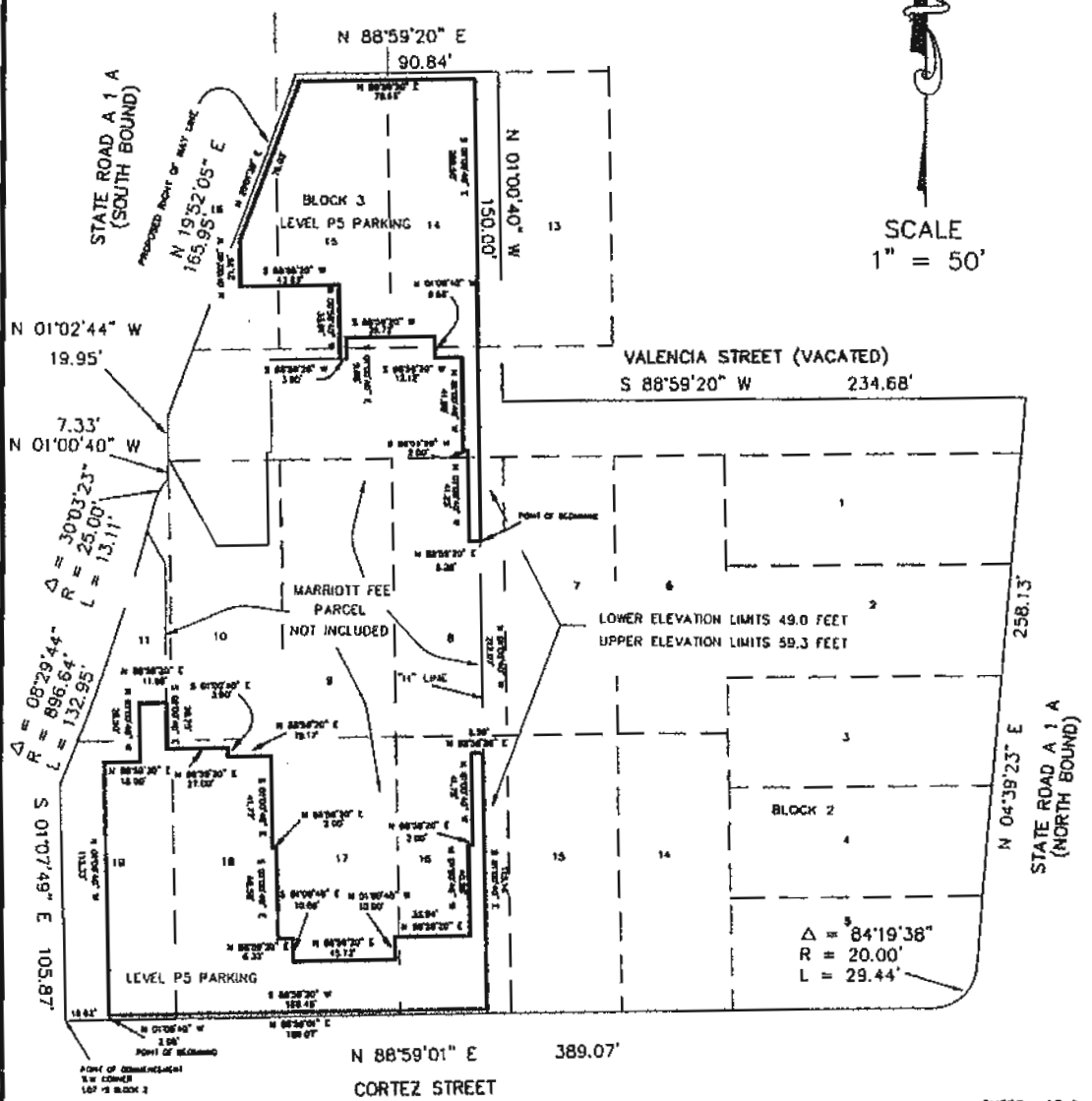
ENGINEERS PLANNERS LAND SURVEYORS

FT. LAUDERDALE, FLORIDA

SKETCH AND DESCRIPTION

EXHIBIT "B-2"

MARRIOTT AIR RIGHTS PARCEL
PARKING LEVEL P5



SCALE
1" = 50'

SHEET 1 OF 3

SEAL

NOT VALID UNLESS
SEALED HERE WITH
AN EMBOSSED
SURVEYOR'S SEAL

CERTIFICATE

THIS IS TO CERTIFY THAT THE SKETCH SHOWN HEREON AND THE ATTACHED DESCRIPTION IS ACCURATE AND CORRECT TO THE BEST OF MY KNOWLEDGE AND BELIEF AND DOES NOT REPRESENT A FIELD SURVEY. I FURTHER CERTIFY THAT THIS SKETCH AND DESCRIPTION MEETS THE MAXIMUM TECHNICAL STANDARDS SET FORTH UNDER RULE 61G17-5 F.A.C. ADOPTED BY THE FLORIDA BOARD OF LAND SURVEYORS, SEPTEMBER 1, 1981.

Keith R. Rogers
KEITH R. ROGERS, PROFESSIONAL SURVEYOR AND MAPPER NO. 4375, STATE OF FLORIDA

| REVISIONS | DATE | BY | DATE OF SKETCH | DRAWN BY | CHECKED BY | MANAGER |
|----------------------|----------|-----|----------------|----------|------------|---------|
| REVISE PARENT PARCEL | 11/16/95 | KRS | 7/11/95 | KRS | KRS | KRS |

SKETCH NO. 4044.00

WILLIAMS HATFIELD AND STONER, INC.

2101 NORTH ANDREWS AVENUE, SUITE 300

ENGINEERS PLANNERS LAND SURVEYORS

FT. LAUDERDALE, FLORIDA

SKETCH AND DESCRIPTION

EXHIBIT "B-2"

MARRIOTT AIR SPACE LEVEL P5

A portion of airspace lying between elevation 49.0 feet and elevation 59.3 feet (elevations based on the National Geodetic Vertical Datum of 1929) and being a portion of Lots 6, 11, 15, 17, 18 and 19, Block 2 and Lots 14, 15 and 16, Block 3 together with a portion of Avenue Valencia (now vacated) as shown on Lauder Dal Mar as recorded in Plat Book 7, Page 30 of the Public Records of Broward County, Florida being more particularly described as follows:

COMMENCE at the Southwest corner of Lot 19 of said Block 2;

THENCE N 88°59'01" E along the South line of said Block 2 a distance of 19.62 feet;

THENCE N 01°00'40" W a distance of 2.08 feet to the POINT OF BEGINNING;

THENCE continue N 01°00'40" W a distance of 113.33;

THENCE N 88°59'20" E a distance of 15.00 feet;

THENCE N 01°00'40" W a distance of 26.50 feet;

THENCE N 88°59'20" E a distance of 11.99 feet;

THENCE S 01°00'40" E a distance of 20.75 feet;

THENCE N 88°59'20" E a distance of 27.00 feet;

THENCE S 01°00'40" E a distance of 3.90 feet;

THENCE N 88°59'20" E a distance of 19.17 feet;

THENCE S 01°00'40" E a distance of 41.77 feet;

THENCE N 88°59'20" E a distance of 2.00 feet;

THENCE S 01°00'40" E a distance of 40.58 feet;

THENCE N 88°59'20" E a distance of 6.33 feet;

THENCE S 01°00'40" E a distance of 10.00 feet;

THENCE N 88°59'20" E a distance of 45.72 feet;

THENCE N 01°00'40" W a distance of 10.00 feet;

THENCE N 88°59'20" E a distance of 33.94 feet;

THENCE N 01°00'40" W a distance of 40.58 feet;

THENCE N 88°59'20" E a distance of 2.00 feet;

THENCE N 01°00'40" W a distance of 41.75 feet;

THENCE N 88°59'20" E a distance of 5.29 feet;

THENCE S 01°00'40" E a distance of 115.16 feet;

THENCE S 88°59'20" W a distance of 189.45 feet to the POINT OF BEGINNING;

TOGETHER WITH THE FOLLOWING DESCRIBED PARCEL:

COMMENCE at the Southwest corner of Lot 19 of said Block 2;

THENCE N 88°59'01" E along the South line of said Block 2 a distance of 189.07 feet;

THENCE N 01°00'40" W a distance of 212.07 feet to the POINT OF BEGINNING;

THENCE S 88°59'20" W a distance of 5.29 feet;

THENCE N 01°00'40" W a distance of 41.25 feet;

THENCE S 88°59'20" W a distance of 2.00 feet;

THENCE N 01°00'40" W a distance of 41.89 feet;

THENCE S 88°59'20" W a distance of 12.12 feet;

THENCE N 01°00'40" W a distance of 9.68 feet;

THENCE S 88°59'20" W a distance of 39.72 feet;

Handwritten initials/signature

| REVISIONS | DATE | BY | DATE OF SKETCH | DRAWN BY | CHECKED BY | MANAGER |
|--------------------|----------|-----|----------------|----------|------------|---------|
| REVISE LDT NUMBERS | 11/16/95 | KRS | 7/11/95 | KRS | KRS | KRS |

SKETCH NO. 4044.00

BK24174PG0181

WILLIAMS HATFIELD AND STONER, INC.

2101 NORTH ANDREWS AVENUE, SUITE 300

ENGINEERS PLANNERS LAND SURVEYORS

FT. LAUDERDALE, FLORIDA

SKETCH AND DESCRIPTION

EXHIBIT "B-2"

MARRIOTT AIR SPACE LEVEL P5

THENCE S 01°00'40" E a distance of 9.88 feet;
 THENCE S 88°59'20" W a distance of 3.00 feet;
 THENCE N 01°00'40" W a distance of 33.61 feet;
 THENCE S 88°59'20" W a distance of 43.83 feet;
 THENCE N 01°00'40" W a distance of 21.79 feet;
 THENCE N 20°01'39" E a distance of 78.03 feet;
 THENCE N 88°59'20" E a distance of 78.65 feet;
 THENCE S 01°00'40" E a distance of 209.50 feet to the POINT OF BEGINNING.

Said airspace situate within the City of Fort Lauderdale, Florida, covering a horizontal surface area of 23,268 square feet, more or less.

(Handwritten initials)

SHEET 3 OF 3

SKETCH NO.
4044.00

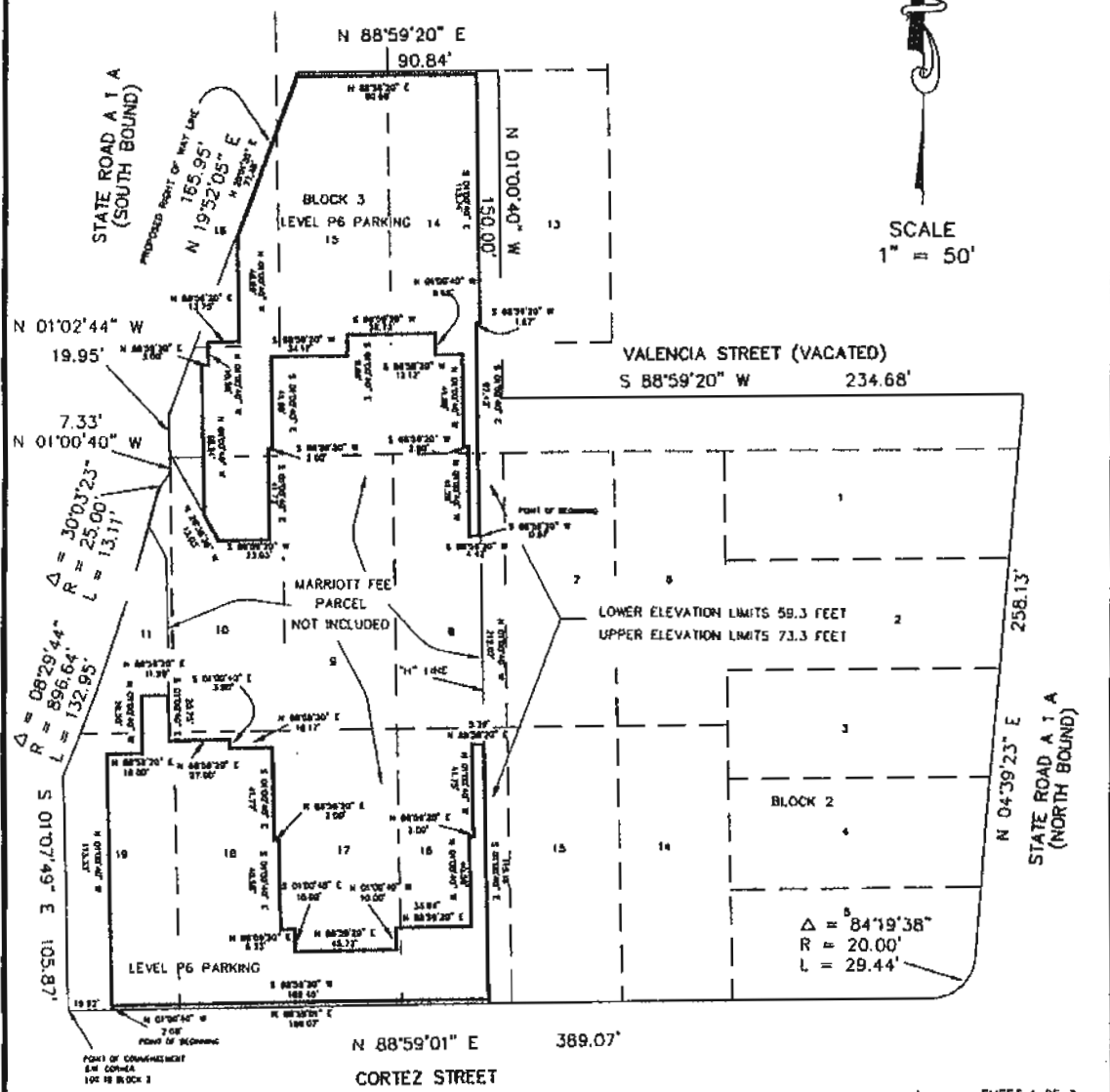
| REVISIONS | DATE | BY |
|-----------|------|----|
| | | |
| | | |

| | | | |
|---------------------------|-----------------|-------------------|----------------|
| DATE OF SKETCH 7/11/95 | DRAWN BY KRS | CHECKED BY KRS | MANAGER KRS |
|---------------------------|-----------------|-------------------|----------------|

WILLIAMS HATFIELD AND STONER, INC.
 2101 NORTH ANDREWS AVENUE, SUITE 300 ENGINEERS PLANNERS LAND SURVEYORS FT. LAUDERDALE, FLORIDA

SKETCH AND DESCRIPTION
 EXHIBIT "B-2"

MARRIOTT AIR RIGHTS PARCEL
 PARKING LEVEL P6



SHEET 1 OF 3

SEAL
 NOT VALID UNLESS
 SEALED HERE WITH
 AN EMBOSSED
 SURVEYOR'S SEAL

CERTIFICATE
 THIS IS TO CERTIFY THAT THE SKETCH SHOWN HEREON AND THE ATTACHED DESCRIPTION IS ACCURATE AND CORRECT TO THE BEST OF MY KNOWLEDGE AND BELIEF AND DOES NOT REPRESENT A FIELD SURVEY. I FURTHER CERTIFY THAT THIS SKETCH AND DESCRIPTION MEETS THE MINIMUM TECHNICAL STANDARDS SET FORTH UNDER RULE 6B17-8 F.A.C. ADOPTED BY THE FLORIDA BOARD OF LAND SURVEYORS, SEPTEMBER 1, 1981.

| REVISIONS | DATE | BY | DATE OF SKETCH | DRAWN BY | CHECKED BY | MANAGER |
|----------------------|----------|-----|----------------|----------|------------|---------|
| REVISE PARENT PARCEL | 11/16/95 | KRS | 7/11/95 | KRS | KRS | KRS |

Keith E. Sanders
 KEITH E. SANDERS, PROFESSIONAL SURVEYOR AND MAPPER NO. 4375, STATE OF FLORIDA

SKETCH NO.
 404400

WILLIAMS HATFIELD AND STONER, INC.

2101 NORTH ANDREWS AVENUE, SUITE 900

ENGINEERS PLANNERS LAND SURVEYORS

FT. LAUDERDALE, FLORIDA

SKETCH AND DESCRIPTION

EXHIBIT "B-2"

MARRIOTT AIR RIGHTS PARCEL
PARKING LEVEL P6

A portion of airspace lying between elevation 59.3 feet and elevation 73.3 feet (elevations based on the National Geodetic Vertical Datum of 1929) and being a portion of Lots 8, 10, 11, 16, 17, 18 and 19, Block 2 and Lots 14, 15 and 16, Block 3 together with a portion of Avenue Valencia (now vacated) as shown on Lauderdale Map as recorded in Plat Book 7, Page 30 of the Public Records of Broward County, Florida being more particularly described as follows:

COMMENCE at the Southwest corner of Lot 19 of said Block 2;

THENCE N 88°59'01" E along the South line of said Block 2 a distance of 19.62 feet;

THENCE N 01°00'40" W a distance of 2.09 feet to the POINT OF BEGINNING;

THENCE continue N 01°00'40" W a distance of 113.33;

THENCE N 88°59'20" E a distance of 16.00 feet;

THENCE N 01°00'40" W a distance of 26.50 feet;

THENCE N 88°59'20" E a distance of 11.09 feet;

THENCE S 01°00'40" E a distance of 20.75 feet;

THENCE N 88°59'20" E a distance of 27.00 feet;

THENCE S 01°00'40" E a distance of 3.90 feet;

THENCE N 88°59'20" E a distance of 18.17 feet;

THENCE S 01°00'40" E a distance of 41.77 feet;

THENCE N 88°59'20" E a distance of 2.00 feet;

THENCE S 01°00'40" E a distance of 40.58 feet;

THENCE N 88°59'20" E a distance of 6.33 feet;

THENCE S 01°00'40" E a distance of 10.00 feet;

THENCE N 88°59'20" E a distance of 45.72 feet;

THENCE N 01°00'40" W a distance of 10.00 feet;

THENCE N 88°59'20" E a distance of 33.94 feet;

THENCE N 01°00'40" W a distance of 40.58 feet;

THENCE N 88°59'20" E a distance of 2.00 feet;

THENCE N 01°00'40" W a distance of 41.75 feet;

THENCE N 88°59'20" E a distance of 5.29 feet;

THENCE S 01°00'40" E a distance of 115.16 feet;

THENCE S 88°59'20" W a distance of 189.45 feet to the POINT OF BEGINNING;

TOGETHER WITH THE FOLLOWING DESCRIBED PARCEL:

COMMENCE at the Southwest corner of Lot 19 of said Block 2;

THENCE N 88°59'01" E along the South line of said Block 2 a distance of 189.07 feet;

THENCE N 01°00'40" W a distance of 212.07 feet;

THENCE S 88°59'20" W a distance of 0.87 feet to the POINT OF BEGINNING;

THENCE continue S 88°59'20" W a distance of 4.42 feet;

THENCE N 01°00'40" W a distance of 41.25 feet;

THENCE S 88°59'20" W a distance of 2.00 feet;

THENCE N 01°00'40" W a distance of 41.89 feet;

THENCE S 88°59'20" W a distance of 12.12 feet;

THENCE N 01°00'40" W a distance of 9.68 feet;

THENCE S 88°59'20" W a distance of 39.72 feet;

[Handwritten signature]

SECTION NO. 4044-00

| REVISIONS | DATE | BY | DATE OF SKETCH | DRAWN BY | CHECKED BY | MANAGER |
|--------------------|----------|-----|----------------|----------|------------|---------|
| REVISE LOT NUMBERS | 11/16/95 | KRS | 7/11/95 | KRS | KRS | KRS |

BK 24174PG0184

WILLIAMS HATFIELD AND STONER, INC.

2101 NORTH ANDREWS AVENUE, SUITE 300

ENGINEERS PLANNERS LAND SURVEYORS

FT. LAUDERDALE, FLORIDA

SKETCH AND DESCRIPTION

EXHIBIT "B-2"

MARRIOTT AIR RIGHTS PARCEL
PARKING LEVEL P6

THENCE S 01°00'40" E a distance of 9.68 feet;
 THENCE S 88°59'20" W a distance of 34.17 feet;
 THENCE S 01°00'40" E a distance of 41.89 feet;
 THENCE S 88°59'20" W a distance of 2.00 feet;
 THENCE S 01°00'40" E a distance of 41.73 feet;
 THENCE S 88°59'20" W a distance of 23.03 feet;
 THENCE N 28°38'38" W a distance of 13.03 feet;
 THENCE N 01°00'40" W a distance of 68.51 feet;
 THENCE N 88°59'20" E a distance of 3.00 feet;
 THENCE N 01°00'40" W a distance of 10.58 feet;
 THENCE N 88°59'20" E a distance of 13.75 feet;
 THENCE N 01°00'40" W a distance of 48.89 feet;
 THENCE N 20°01'35" E a distance of 77.48 feet;
 THENCE N 88°59'20" E a distance of 80.60 feet;
 THENCE S 01°00'40" E a distance of 113.74 feet;
 THENCE S 88°59'20" W a distance of 1.67 feet;
 THENCE S 01°00'40" E a distance of 97.42 feet to the
 POINT OF BEGINNING;

Sold airspace situated within the City of Fort Lauderdale, Florida, covering a horizontal
 surface area of 27,665 square feet, more or less.

RECORDED IN THE OFFICIAL RECORDS BOOK
 OF SHERBROOK COUNTY, FLORIDA
 VOL. 17, PAGE 184-185

(Handwritten initials)

SHEET 3 OF 3

SECTION NO. 4044.00

| REVISIONS | DATE | BY |
|-----------|------|----|
| | | |
| | | |

| | | | |
|---------------------------|-----------------|-------------------|----------------|
| DATE OF SKETCH 7/11/95 | DRAWN BY KRS | CHECKED BY KRS | MANAGER KRS |
|---------------------------|-----------------|-------------------|----------------|